

ARTEQUINE Sachets & Capsules

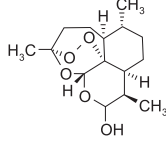
(Dihydroartemisinin + Piperaquine Phosphate)

آرٹی کوئین

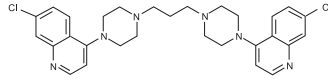
(ڈائی ہائیڈرو آرٹیمیسینین + پیرا کوئین فاسفیٹ)

DESCRIPTION:

Artequine (Dihydroartemisinin + Piperaquine phosphate) is a fixed dose artemisinin – based combination therapy (ACT) combining dihydroartemisinin, an artemisinin derivative, and piperaquine phosphate (4-aminoquinoline compound).



Dihydroartemisinin (DHA)



Piperaquine (PQ)

COMPOSITION:

ARTEQUINE Capsule

Each capsule contains:
Dihydroartemisinin 40 mg
Piperaquine Phosphate 320 mg
Product Complies Platinum Specs.

ARTEQUINE Sachets

Each sachet contains:
Dihydroartemisinin 15 mg
Piperaquine Phosphate 120 mg
Product Complies Platinum Specs.

MECHANISM OF ACTION:

Dihydroartemisinin mainly interferes with the membrane structures of trophozoites (erythrocytic asexual forms), i.e. whorled food vacuole membrane, distended mitochondria, swollen nuclear membranes, dissociation of ribosomes from endoplasmic reticulum leading to cytoplasmic vacuolization and autophagocytosis. In addition, biochemical depression of protein synthesis and nucleic acid synthesis are exhibited. Experimental results show that Piperaquine phosphate interferes with physiological function of the food vacuole membrane of the trophozoites leading to autophagocytosis of the parasites. It has no marked effect on the ring forms, immature or mature schizonts and the male or female gametocytes. Studies showed that the two active ingredients of ARTEQUINE had the synergistic effect.

PHARMACOKINETICS:

Upon oral administration Dihydroartemisinin is rapidly absorbed and maximum blood concentration attained 1 hour afterwards, with a half-life of about 4 hours. It is widely distributed in the body but more concentration in the liver, kidneys and bile. Approximately 80% is excreted through the urine and feces within 24 hrs after administration. Upon oral administration of Piperaquine phosphate about 80-90% is absorbed within 24 hrs. It is widely distributed in the body mainly in the liver, kidneys, lungs and spleen. About 25% of the total dose is partitioned in the liver within 8 hrs of intake. Elimination is very slow with the half life of about 9.4 days. It is excreted through bile by hepatocentral circulation.

INDICATIONS:

Artequine (Dihydroartemisinin + Piperaquine phosphate) Capsules and Sachets are indicated for the treatment of all kinds of malarias even malaria caused by multi resistant Plasmodium falciparum.

DOSE AND ADMINISTRATION:

ARTEQUINE Capsules: Take orally as per following dosage schedule in different age groups:

ARTEQUINE (40/320) Capsule

Age (Years)	7 - 10 Years	11 - 15 Years	> 16 Years
Initial	1 capsule	2 capsules	2 capsules
6 th hrs	1 capsule	1 capsule	2 capsules
24 th hrs	1 capsule	1 capsule	2 capsules
32 nd hrs	1 capsule	2 capsules	2 capsules

ARTEQUINE Sachets :

Mix the sachet with drinking water, shake and take it orally. The dosages for different age groups are shown as follows:

ARTEQUINE (15/120) Sachets

Age (Years)	< 2 Years	2 - 3 Years	4 - 6 Years
Initial	Half sachet	1 sachet	1.5 sachets
6 th hrs	Half sachet	1 sachet	1.5 sachets
24 th hrs	Half sachet	1 sachet	1.5 sachets
32 nd hrs	Half sachet	1 sachet	1.5 sachets

6.3 mg / kg dihydroartemisinin + 50 mg / kg of piperaquine for 2-Day malaria treatment as per body weight.

Another substitute dosage regimen (e.g. 0, 12, 24 & 36 hr.)

OVERDOSAGE:

In case of suspected over dosage, symptomatic specialized therapy should be given without any delay.

ADVERSE REACTIONS:

Nausea and Vomiting may occur occasionally with incidence of less than 6%. No noticeable side effects of Dihydroartemisinin are reported. The Dihydroartemisinin would, for certain individuals, bring effects of greater or lesser severity; for example, a reversible reduction in reticulocyte counts. Possible side effects of Piperaquine include mild nausea, vomiting and abdominal discomfort. Reversible leucopenia was infrequently reported; dyspnea and palpitations were also reported but not further specified.

DRUG INTERACTIONS:

In an in vitro assessment of antimalarial combinations, Dihydroartemisinin showed no interaction. Antacid: reduce drug's absorption.

CONTRAINDICATIONS:

Patients with hypersensitivity to its components.
The product is not advisable in the first trimester of pregnancy.

PRECAUTIONS:

Lactation: passing in maternal milk has not been established. If any doubt, kindly do not hesitate to seek the advice of the physician or pharmacist.
In order to avoid any possible drug interaction, kindly inform the physician or pharmacist if any other drugs are being taken.

PRESENTATION:

Artequine capsule is available in blister pack of 8's.
Artequine sachet is available in a pack of 16's sachets.

Store below 30°C in a dry place, protect from light.
To be dispensed on the prescription of a registered medical practitioner only.
Keep out of the reach of children.

خود راک: ڈاکٹر کی ہدایت کے مطابق استعمال کریں۔
دوا کو 30°C سے کم درجہ حرارت پر محفوظ رکھیں۔
پرکھیں، روشنی سے بچائیں۔
صرف رجسٹرڈ ڈاکٹر کے نسخے پر فروخت کریں۔
بچوں کی تکلیف سے دور رکھیں۔

Note: Artequine Sachet contains lactose.

نوٹ: آرٹی کوئین ساٹھی میں لیکٹوز شامل ہے۔

Manufactured by:

Platinum
Pharmaceuticals (Pvt) Ltd.

A-20, North Western Industrial Zone,
Bin Qasim, Karachi-75020, Pakistan.

QAR No. AW21-0841